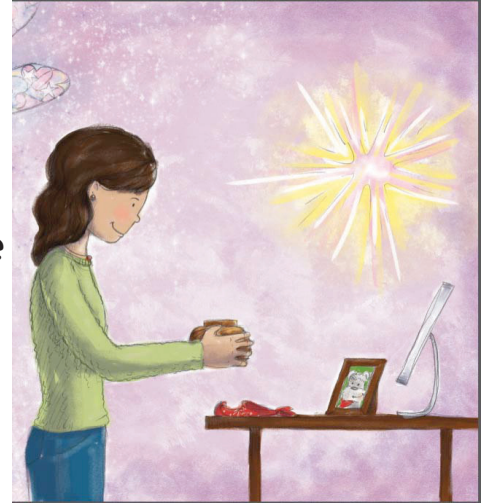


Hi Kids!



Here's a picture of my good friend, Christina. She is holding a jar with the ashes of her best dog-friend Emrys. She chose to cremate him, after he died.



Do you know what it means to be cremated? When a person or pet dies, the body can be turned into ashes. There is no pain involved. The people who loved the pet or person can keep the ashes. Sometimes people choose to sprinkle the ashes in special places. Christina did.

If you want to know more about Christina and Emrys, read [For the Love of Emrys](#).



Here's a beautiful jar for you to decorate. You can pretend it's Christina's jar of Emrys' ashes, or you can pretend it's a jar with the ashes of someone else who was cremated.